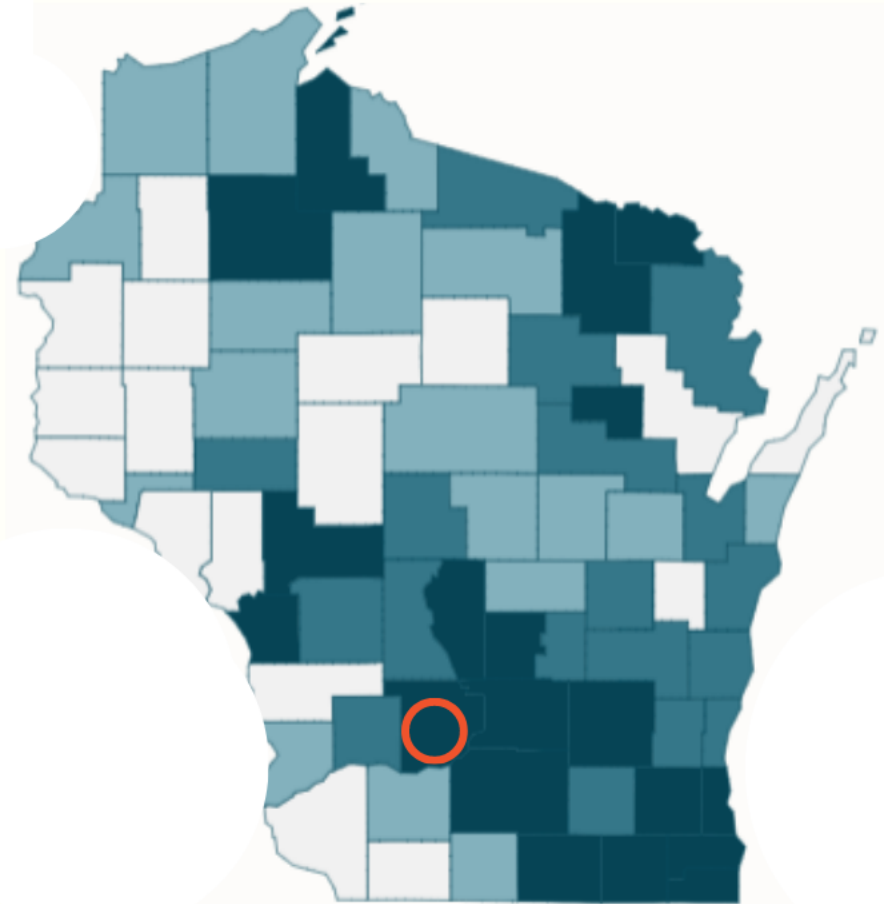


Sara Jesse
Community Health Strategist
Public Health Sauk County

Sauk County, Wisconsin
Northwest of Madison, WI
Waterpark capital of the world!
Rural population of 64K
No OFR legislation
About 14 overdose deaths per year
6 reviewed annually





EMS/Peer Support Rural Response Teams: An Innovative Model for Enhancing Linkages to Care

Sara Jesse
Community Health Strategist
Public Health Sauk County



Sauk County Response Teams

In Sauk County, if you are seen by EMS for anything substance use-related-- drinking too much or an accidental or intentional overdose, for example-- you receive a follow-up visit from Response Teams. A collaboration between Public Health Sauk County, WisHope, and 7 local EMS agencies, Response Teams are composed of EMS and a WisHope Peer Recovery Coach. The Teams make in-home or in-facility visit attempts to streamline a connection to substance use disorder treatment, harm reduction, and other needed services.



Linda's story*



When Response Teams met Linda after an overdose, she was in need of financial, medical, and mental health services. The first step: enroll in peer support, Medicaid and FoodShare. Next, help Linda connect to psychiatry, psychotherapy and primary care. Soon after, Linda found she was pregnant, so Teams made a warm handoff to Public Health's Nurse Family Partnership, an intensive home visiting program for first-time, at-risk moms. Unfortunately, Linda miscarried, but she was able to process this trauma with her therapist. Now ready to work, Linda went with her Peer Recovery Coach to get a new ID and social security card, and then to the Job Center, where she created a resume and applied for employment. Six months after meeting Response Teams, Linda was employed and in active recovery, seeing a therapist regularly.

**Not her real name or photo.*

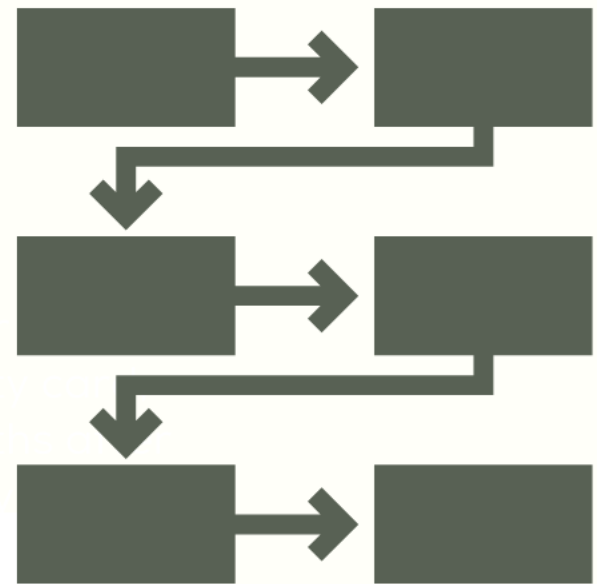
Sauk County Response Teams

WI rural county of 64,000. OFR began in 2018.

OFR recommendation... who makes warm hand-offs to services after a non-fatal overdose?

Public Health hosted a meeting to map a flow chart. 50 attended.
Voted: Response Teams prioritized

Public Health applied for and received grant funding. Formed a planning team. Reached out to existing Response Teams in urban areas of WI. Hired a consultant. Met with EMS chiefs, created Business Associate Agreements.





Sauk County
**Response
Teams**

Met 1:1 with interested EMS Response Team members.

Set up HIPAA-protected online database/forms: Cognito

Launched May of 2021. EMS and WisHope invoice Public Health for their time on the project.

Year 1: monthly meetings with EMS and Peer Support to improve protocols. Now meeting every other month to refine.

Regular reports to OFR Team.

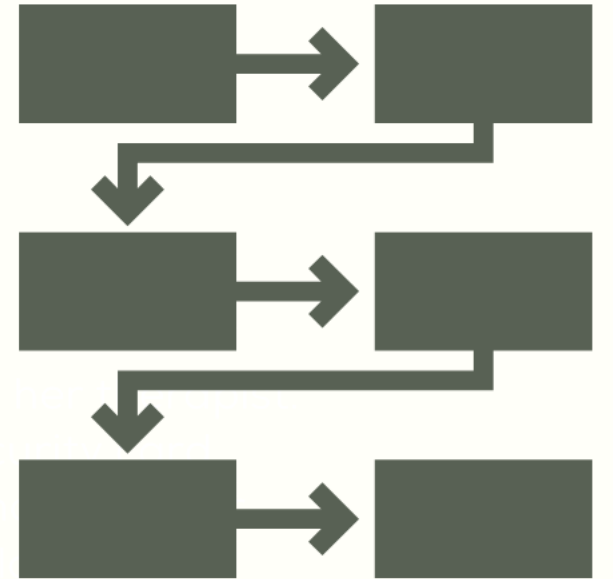
Sauk County Response Teams

EMS run daily report on Image Trend. Send referrals via Cognito link.

Other community partners (law enforcement, CPS, treatment programs, Adult Treatment Court, etc) make referrals also.

Peer Support receives referral, schedules visit.

EMS report on Cognito. Peer Support report on different platform.





123 referrals from 7 EMS agencies

1 in 3 resulted in contact with the client on the first attempt.



No one home? Teams follow up by phone and text and made **92** additional visit attempts.

1 in 6 visits is with a loved one instead.



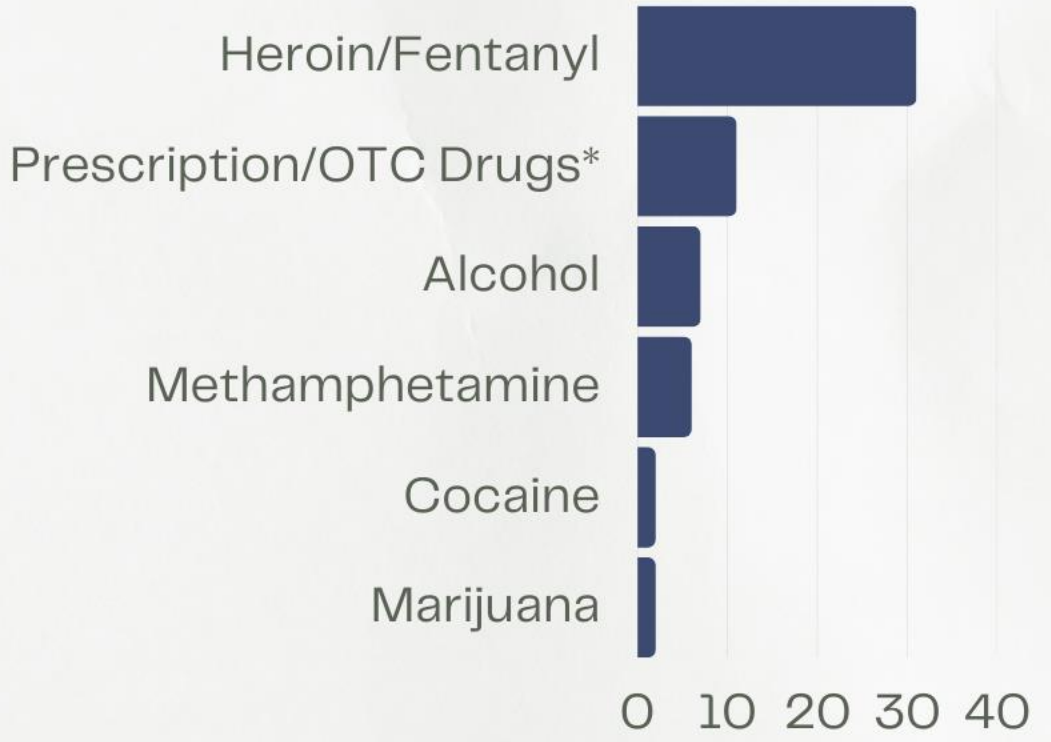
Average time Team spends on a first visit: **42 minutes**

Data Source: WisHope database.

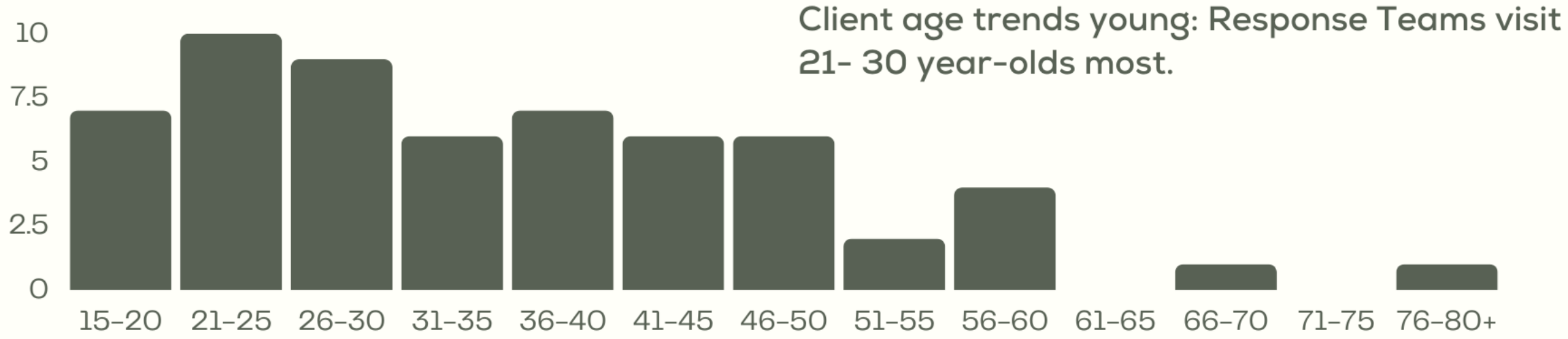


*Of 123 referrals,
1
Response Teams
client later died by
overdose.*

Substances involved in the EMS incident that prompted referral, if known: **heroin/fentanyl** is the most common.



*Prescription drugs include both opioid and non-opioid
OTC= Over-the-Counter

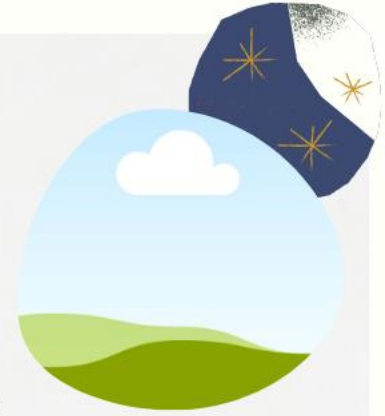


Data Source: WisHope database.



Resources provided

- 35 Narcan kits
- 8 harm reduction education kits
- 6 fentanyl test strip kits
- Plus unused needles & other supplies



Warm hand-offs

- 10 to treatment, including upon release from jail
- 10 to continued services with Peer Recovery Coaches
- Plus: withdrawal medication advocacy, health and mental health care appointments, food assistance, health insurance, housing, employment, & more



Data Source: WisHope database.

Sauk County
**Response
Teams**
your health your way

Program Contact

Sara Jesse, Public Health Sauk County

608-355-4308

Sara.Jesse@saukcountywi.gov



**PUBLIC HEALTH
SAUK COUNTY**
WISCONSIN

Together we thrive